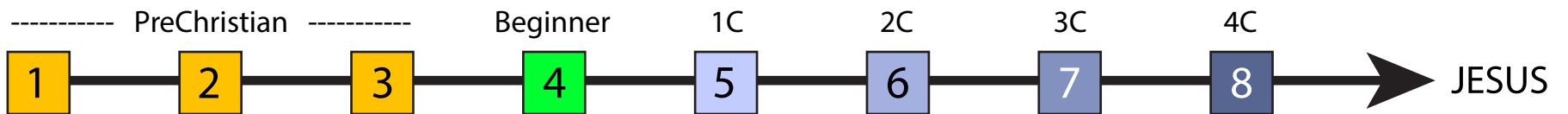


# SPIRITUAL GROWTH PATHWAY

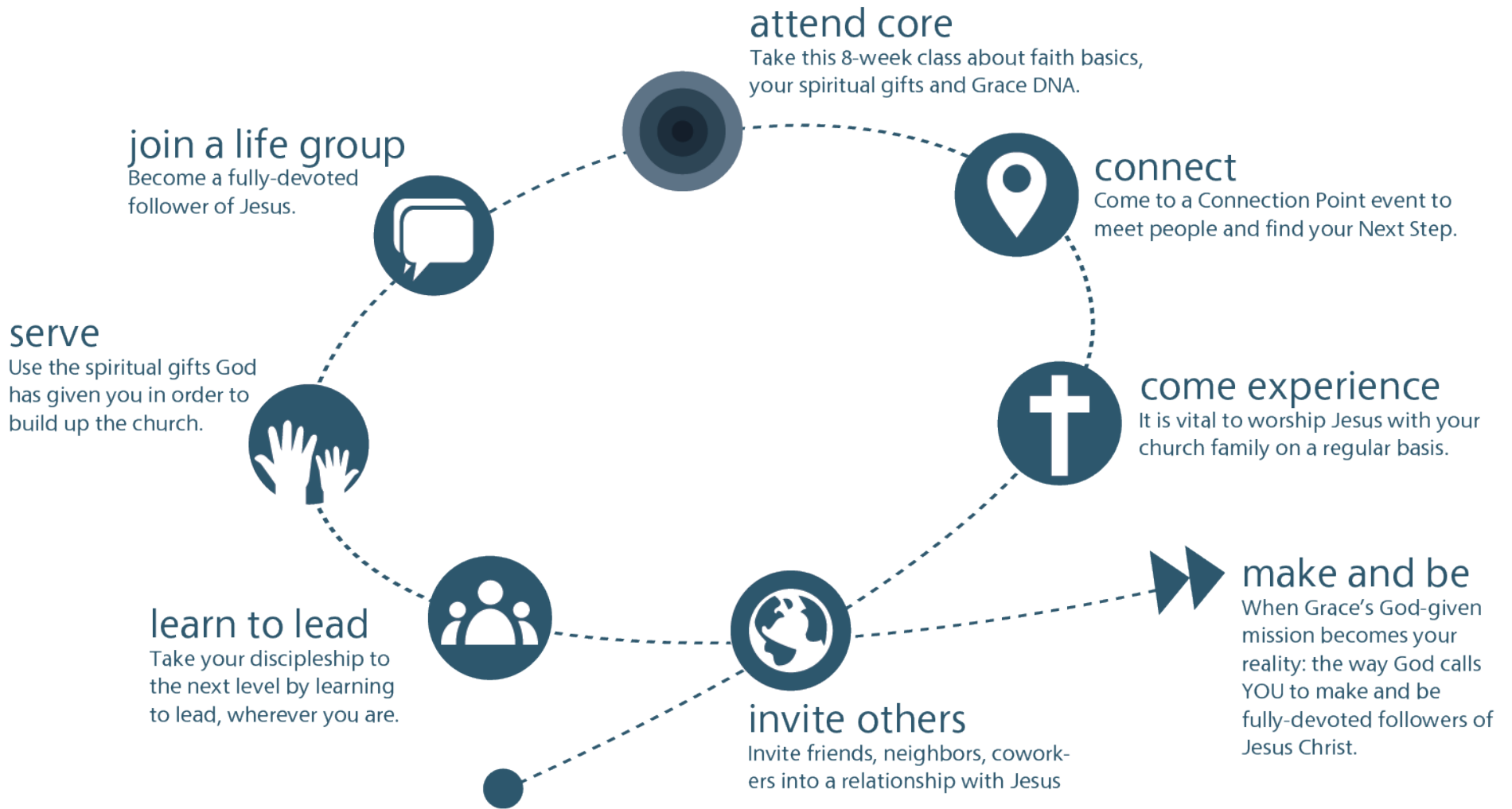
1. No spiritual framework. Never attended church. Never explored God, the Bible or anything spiritual.
2. I am interested in things of faith and have questions about God and the Bible.
3. I am studying the Bible and open to discovering more about the relationship God wants with me.
4. I have committed my life to following Jesus. I have told Him. I have told others by being baptized.



5. I am attending church regularly, **celebrating** my hope in Jesus with a local church.
6. I am **connected** in spiritual community, in relationships with other Jesus-followers who are helping me grow.
7. I am a stakeholder in my church, using my time, talent and treasures to **contribute** to the mission.
8. I am a leader to someone else; **collaborating** in ministry, leading a group, or discipling another person.



# PATHWAY



# New Vision Ministries growth track



This class is a basic introduction of the ministry of New Vision and will help you understand church membership. The class takes place the first Sunday of every month at 12:30pm. Lunch and child care will be provided.



This class leads you through the basic beliefs every Christian needs to find success in their walk with Christ. This class takes place the second Sunday of every month at 10:30am in Portable 4.



We want to realize what makes you so unique. This class will help you discover your gifts, personality, and purpose in life and see how God combines them for the best fit in ministry. This class takes place the third Sunday of every month at 10:30am in Portable 4.



Attend an orientation or training session in the ministry area of your choice to learn more about how to get involved. This training takes place the fourth Sunday of every month in Portable 4. The Growth Track is complete when you start or join a ministry team.



# EXPANSION CHURCH

## SPIRITUAL FORMATION GROWTH TRACK

